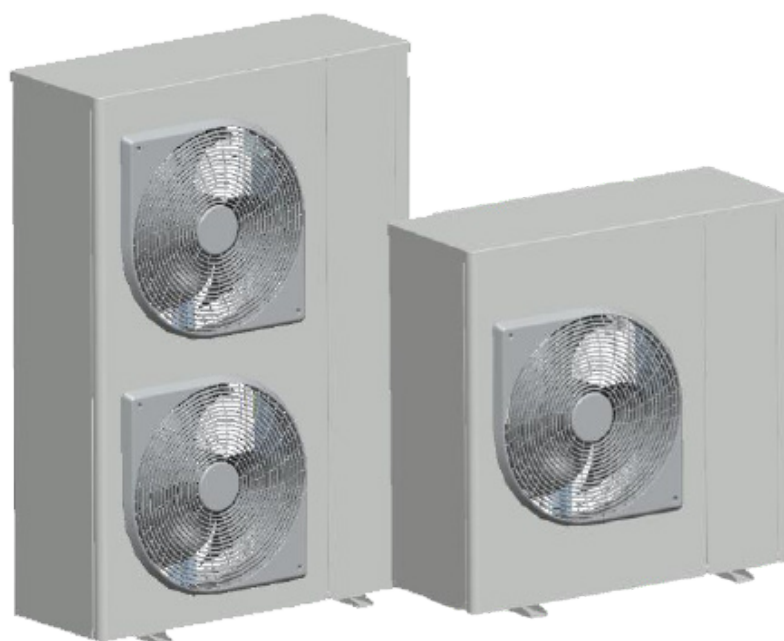


HYDRO UNIT P

Air-to-Water rotary heat pump



TECHNICAL DATASHEET FOR LOW TEMPERATURE SPACE HEATER

Information requirements pursuant to regulation (EU) N°813/2013

Description

Model	HYDRO UNIT P 014
Air-to-Water Heat pump	Yes
Water-to-Water Heat pump	No
Brine-to-Water Heat pump	No
Low-temperature Heat pump (30°C / 35°C)	Yes
Equipped with supplementary heater	No
Heat pump combination heater	No
Climate	Average

Performances established in accordance with EN14511:2018 and EN14825:2018

	Symbol	Unit	
Rated heat output(*)	Prated	kW	9
Seasonal Space Heating Energy Efficiency	$\eta_{s,h}$	%	187
Annual energy consumption	QHE	kWh	4068

Declared capacity (Pdh), declared coefficient of performance (COPd) and declared degradation coefficient (Cdh(**)) for heating for part load at indoor temperature 20 °C and outdoor temperature Tj

Tj = -7 °C	Pdh	kW	8.27
	COPd		2.74
	Cdh(**)		-
Tj = 2 °C	Pdh	kW	5.03
	COPd		4.65
	Cdh(**)		-
Tj = 7 °C	Pdh	kW	4.86
	COPd		6.55
	Cdh(**)		0.97
Tj = 12 °C	Pdh	kW	3.81
	COPd		9.06
	Cdh(**)		0.95
Tj = operation limit temperature °C	Pdh	kW	7.66
	COPd		2.41
	Cdh(**)		-
Tj = bivalent temperature °C	Pdh	kW	8.27
	COPd		2.74
	Cdh(**)		-
Bivalent temperature	Tbiv	°C	-7
Operation limit temperature	TOL	°C	-10
Heating water operating limit	WTOL	°C	75

Power consumption in modes other than active mode

Off mode	POff	W	10
Thermostat off-mode	Pto	W	15
Standby mode	PSB	W	10
Crankcase heater mode	Pck	W	0

Supplementary heater

Rated heat output(*)	Psup	kW	0
Type of energy input			Electrical

Other items

Capacity control			VARIABLE
Outlet temperature control			VARIABLE
Water flow rate control			FIXED
Rated Air flow rate outdoor(1)		l/s	1800
Sound power level	LWA	dBA	52

Contact details	CARRIER SCS - Route de Thil - 01120 Montluel – FRANCE
-----------------	---

(1)Not applicable for water-to-water and brine-to-water heat pumps

(*)For heat pump space heaters and heat pump combination heaters, the rated heat output Prated is equal to the design load for heating Pdesignh, and the rated heat output of a supplementary heater Psup is equal to the supplementary capacity for heating sup(Tj).

(**):If Cdh is not determined by measurement then the default degradation coefficient of chillers shall be 0.9.